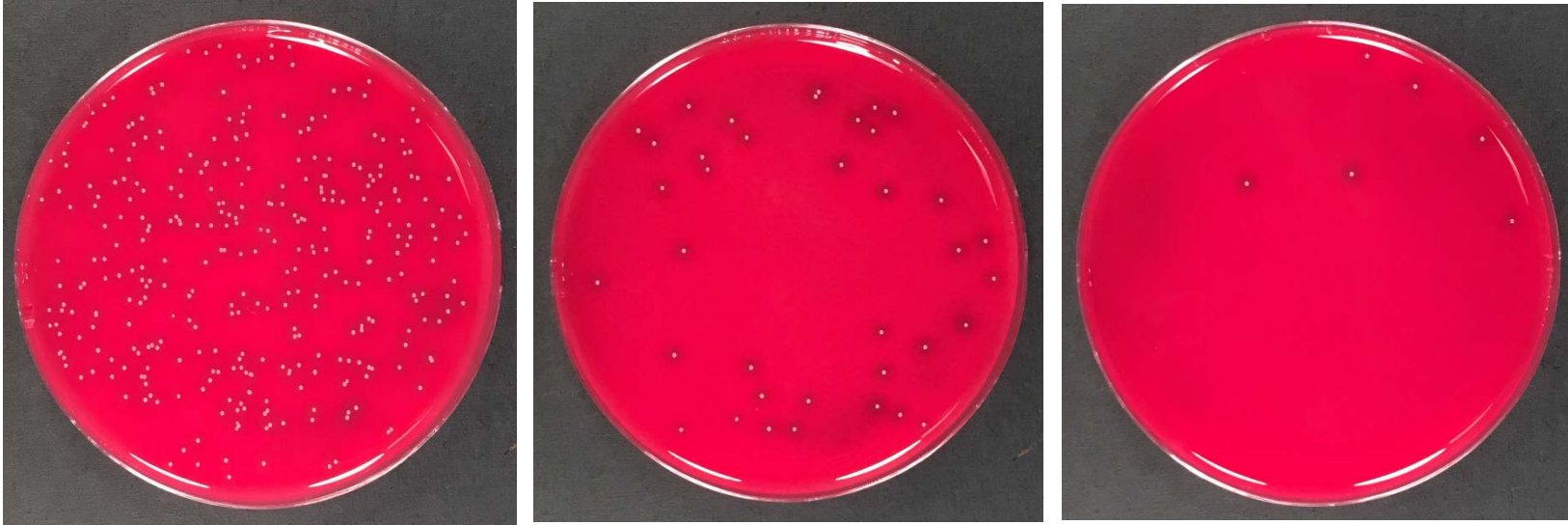


A)

undiluted

10^{-1}

10^{-2}



B)

	CFU	dilution factor	CFU/mL	CFU/organ	Log ₁₀	Avg. Log ₁₀
undiluted	330	330	3300	990	3.00	3.10
10^{-1}	38	380	3800	1140	3.06	
10^{-2}	6	600	6000	1800	3.26	